

Museums and exhibitions  
in Luxembourg 2012

EN

# MUSEUMSMILE



**m**  
d' stater  
muséeën

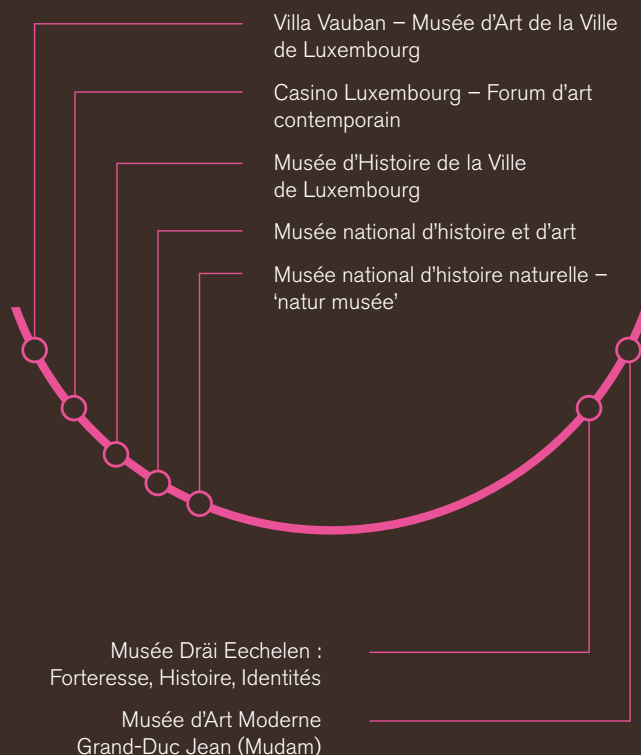
## “A big smile” for a small mile

There are a surprising number of museums and art centres in the small capital of Luxembourg. They can be linked up as points on a map of the city. Luckily for visitors they cover a total distance of slightly less than a full mile. Visiting these museums is easy because of the short distance between them. However, it is the variety and uniqueness of the seven cultural institutions strung out in a smile-like arc over the uneven topography that constitute the real attraction enticing visitors to come and see them.

Five of the institutions are in the city centre, all within walking distance. Visitors can enjoy ancient masterpieces of painting in the Villa Vauban, a 19th-century bourgeois building with a new contemporary extension located in the heart of the city park; discover the archaeological and historical heritage of the country as well as the State art collections from the Middle Ages to the present day (15th to 21st centuries) in the National Museum of History and Art, near the former fish market; explore the Museum of the History of the City of Luxembourg, also located in the heart of the old city; get acquainted with the latest trends in the international art scene at Casino Luxembourg; and go “down to the valley” to experience a refreshing perspective on natural history, evolution and biodiversity offered by the National Museum of Natural History (reached by lift).

At only a 15-minute walk from the city centre (from Grund the path leads up the steep wooded slopes of Kirchberg), or just a short bus ride away, the new Park Dräi Eechelen on the Kirchberg plateau is home to two museums next to each other: on one side, the Musée Dräi Eechelen devoted to the World Heritage site of Luxembourg’s fortifications; on the other, the Musée d’Art Moderne Grand-Duc Jean (Mudam Luxembourg) with its contemporary art collection and temporary exhibitions. The walking paths, cycle paths and bus routes relaxingly lead visitors from one museum to the next, passing in front of numerous art galleries, boutiques, restaurants and cafés and offering excellent scenic views. In the present brochure, the “d’stater muséeën” association has provided a short description of each museum and art centre as well as several ways to progress easily along the “museum mile”. Experience the cultural side of the city... and (s)mile!

## 1 mile, 7 museums



# Villa Vauban – Musée d'Art de la Ville de Luxembourg



This 19th-century bourgeois mansion with a modern extension is located in the heart of the city, in the relaxing setting of an old park. The exhibitions hosted by the Villa Vauban present the collections of the City of Luxembourg, made up largely of 17th-century Dutch art works and 19th-century French history paintings and landscapes. The museum varies its exhibition formats, enabling the works to be explored from different angles: the art collectors, the unusual aspects and "life" of the paintings, the artists, the subjects, and so on. High-profile temporary exhibitions feature loans from major international collections. A varied programme of activities awaits the visitor.

## Exhibitions

---

### until 10.06.2012

- Emotions. Reflections in Painting and Photography

### 27.04.-14.10.2012

- Brueghel, Cranach, Titian, van Eyck.  
Art Treasures from the Brukenthal Collection

## Address

---

Villa Vauban – Art Museum of the City of Luxembourg  
18, avenue Émile Reuter / L-2090 Luxembourg  
T (+352) 47 964 901 / F (+352) 27 478 431  
villavauban@2musees.vdl.lu / www.villavauban.lu

## Opening hours

---

Monday to Sunday, 10 a.m. to 6 p.m.  
Friday until 9 p.m.  
Closed on Tuesday and on 01.01

The museum will be closed from 15.10.2012 and will reopen on 09.02.2013 with the exhibition "The Colours of the Night"

## Entrance fee

---

Entrance fee: € 5 / Reduced fee: € 3  
Free entrance on Friday from 6 p.m. to 9 p.m.

## vél'oh

---

Charly's Gare

Pieter Brueghel The Younger (1564-1637), *The Massacre of the Innocents in Bethlehem*, 1586, © Musée Brukenthal, Sibiu, Photo: C. Weber



# Casino Luxembourg – Forum d'art contemporain



## Address

Casino Luxembourg – Forum for Contemporary Art  
41, rue Notre-Dame / L-2240 Luxembourg  
T (+352) 22 50 45 / F (+352) 22 95 95  
info@casino-luxembourg.lu / www.casino-luxembourg.lu

## Opening hours

Monday to Friday, 11 a.m. to 7 p.m. / Thursday until 8 p.m.  
Saturday, Sunday and public holidays from 11 a.m. to 6 p.m.  
Closed on Tuesday and on 01.01 / 01.11 / 25.12.

## Entrance fee

Entrance fee: €4 / Reduced fee: €3  
Free entrance on Thursday from 6 p.m. to 8 p.m.

## vél'oh

Aldringen

Casino Luxembourg – Forum d'Art Contemporain organises exhibitions on contemporary art attesting to the variety and complexity of current art movements. The international exhibition programme – mostly featuring young artists – gives a comprehensive insight into contemporary creation. With its exhibitions and artist residencies, Casino Luxembourg, regardless of any museological concerns, functions like an artistic and experimental think tank focusing on the latest trends in the art scene. A rich cultural programme, ranging from general guided and thematic tours, conferences and round tables to performances of contemporary music complement the exhibitions. The InfoLab of Casino Luxembourg is, to date, the only specialised library of contemporary art in Luxembourg open to the public.

## Exhibitions

### until 22.04.2012

- L.A. Raeven – Ideal Individuals

### 03.03. - 22.04.2012

- project room @ aquarium: Daniel Jacoby

### 12.05. - 02.09.2012

- Wesley Meuris – R-05.Q-IP.0001

### 29.06. - 02.09.2012

- project room @ aquarium: Maria Anwander

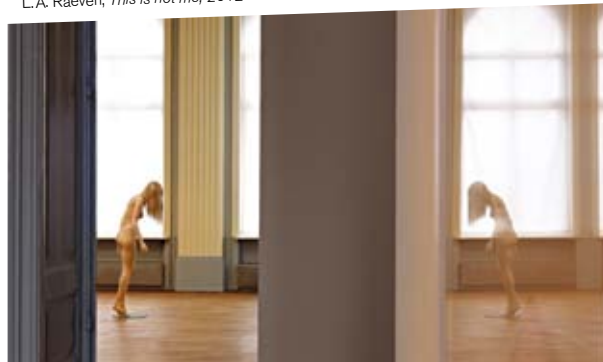
### 16.09. - 16.12.2012

- Atelier Luxembourg. Making of

### 08.12. - 06.01.2013

- Gast Bouschet & Nadine Hilbert: Unground

L.A. Raeven, *This is not me*, 2012. Exhibition view © Photo: Andres Lejona, 2012



# Musée d'Histoire de la Ville de Luxembourg



## Address

History Museum of the City of Luxembourg  
14, rue du St-Esprit / L-2090 Luxembourg  
T (+352) 47 964 500 / F (+352) 47 17 07  
mhvl@2musees.vdl.lu / www.mhvl.lu

## Opening hours

Tuesday to Sunday from 10 a.m. to 6 p.m. / Thursday until 8 p.m.  
Closed on Monday and on 01.01 / 01.11 / 25.12.

## Entrance fee

Entrance fee: € 5 / Reduced fee: € 3  
Free entrance on Thursday from 6 p.m. to 8 p.m.

## vél'oh

Knuedler

The History Museum is set in the old part of the city, embedded in an ensemble of historical buildings. On three storeys, partly dug into the rock, the visitor can discover the history of the city through original exhibits and topographical models, supplemented by an interactive multimedia system. Five thematic departments present the more recent history of the city, accompanied by the work of contemporary artists. Large temporary exhibitions regularly take place in the three upper storeys.

## Exhibitions

### until 02.09.2012

- Visualising Europe on Political Posters since 1950

### until 29.04.2012

- Poor Luxembourg?

### 08.06.2012-31.03.2013

- ABC – Luxembourg for Beginners... and Advanced!

### 13.10.2012-31.03.2013

- Atelier Luxembourg, Lex and Pit Weyer, Posters

"Kachkéisschmier" (slice of bread with soft cheese spread),  
a Luxembourgish speciality, © MHVL, Photo: B. Fuge, 2012





The museum exhibit is laid out over ten levels, five of which are dug into the rock below ground level, and is designed to be chronological. Moving from one floor up to the next, the visitor experiences a journey through time, from the realms of prehistory to the latest artistic experiments. The archaeology rooms show the evolution of human presence on the national territory, from prehistoric vestiges to the late Middle Ages. Among the most precious exhibits is an impressive series of aristocratic tombs from the late Iron Age, and the famous Roman mosaic of the Muses from Vichten. The numismatic exhibit features representative samples of Celtic, Roman, Medieval and modern coins. The art collections include old paintings, such as the famous Bacchus, Venus and Cupid (circa 1530/1531) by Rosso Fiorentino, as well as modern and contemporary art from Luxembourg and other countries.

### **Exhibitions**

---

#### **until 25.03.2012**

- Joseph Probst (1911-1997) 100th Anniversary

#### **until 02.09.2012**

- Under our Feet – Archeology in Luxembourg 1995-2010

#### **05.10.-17.02.2013**

- Art Treasures from Kamigata. Japanese wood carvings from Osaka and Kyoto 1780-1880

### **Address**

---

National Museum of History and Art  
Marché-aux-Poissons / L-2345 Luxembourg  
T (+352) 47 93 30-1 / F (+352) 47 93 30-271  
musee@mnha.etat.lu / www.mnha.lu

### **Opening hours**

---

Tuesday to Sunday from 10 a.m. to 6 p.m. / Thursday until 8 p.m.  
Closed on Monday and on 01.01 / 01.11 / 25.12

### **Entrance fee**

---

Entrance fee: € 5 / Reduced fee: € 3  
Free entrance on Thursday from 5 p.m. to 8 p.m.

### **vél'oh**

---

Knuedler

View of the exhibition "Under our Feet".  
Archeology in Luxembourg 1995-2010, © Photo: Tom Lucas



# Musée national d'histoire naturelle – 'natur musée'



## Address

National Museum of Natural History  
25, rue Münster / L-2160 Luxembourg-Grund  
T (+352) 46 22 33-1 / F (+352) 47 51 52  
musee-info@mnhn.lu / www.mnhn.lu

## Opening hours

Tuesday to Sunday from 10 a.m. to 6 p.m.  
Closed on Monday and on 01.01 / 01.05 / 01.11 / 25.12

## Entrance fee

Entrance fee: € 4,50 / Reduced fee: € 3

## vél'oh

Helleg Geesch (lift to the lower city)

In the National Museum of Natural History, science and nature become a fascinating experience for old and young alike, giving visitors an opportunity to understand other people and the environment in which they live from a new perspective.

## Exhibitions

### 15.03. - 15.04.2012

#### - The Westwall goes green

At the end of World War II most of the Westwall fortifications were destroyed. During the following decades many endangered species of animals and plants found refuge there. The destroyed or semi-destroyed bunkers have become precious habitats.

### 26.04. - 16.09.2012

#### - Planet of forests

The exhibition is conceived and produced by the National Museum of Natural History. The focus lies on the most beautiful forests on earth and on ancient forests who are long gone.

### 02.10. - 06.01.2013

#### - Humanofolie

Due to his exact knowlegde of ceramics and pottery, the sculptor Jean Fontaine has created a unique world inhabited by alien creatures. The visitor can admire a framework of living and inanimate graftings which represent witnesses of superhumans, cyborgs and mutants. The artist shows us a world in which artificial intelligence seems to have beaten nature.

*Humanofolie* © Photo: Jean-Pierre Eschmann



# Musée Dräi Eechelen : Forteresse, Histoire, Identités



The remains of Fort Thüngen, which are known as "Dräi Eechelen" (Three Acorns), have undergone major redevelopment in the last decade. Partially razed when the city's fortifications were demolished in 1867, the fort's vestiges and adjacent structures were unearthed, restored and rebuilt. They now house the Musée Dräi Eechelen and an information base for the Circuit Vauban walk. The history of the fort and its impact on the history of Luxembourg is presented thematically on ground level, which is also home to a data base within an interactive area. An auditorium and a temporary exhibition space occupy the first floor. This is where the Musée Dräi Eechelen will host its first exhibition, organized by the University of Luxembourg, focusing on issues surrounding the country's national identity. The future museum became part of the Musée national d'histoire et d'art in September 2009.

## Exhibitions

from 15.07.2012

### - I-Lux, Identities in Luxembourg

How to face a concept as vague and as polemical as "identity"? The team of the University of Luxembourg has chosen a two-sided approach: to aim straight at the goal and defuse the extremely politicised meaning of identity. What we are is not only defined by nationality but also by gender, physical constitution (age, health), social environment, geographical location, languages and values. The visitors will be confronted with their own images and the way they see themselves. The exhibition doesn't provide any preconceived answers but invites self-reflection.

## Address

Musée Dräi Eechelen: Fortress, History, Identities  
5, Park Dräi Eechelen / L-1499 Luxembourg-Kirchberg  
T (+352) 26 43 35 / F (+352) 26 43 35-99  
info@m3e.etat.lu / www.museedraieechelen.lu

Museum under construction. Opening on 15.07.2012.

## Opening hours

Monday to Sunday from 10 a.m. to 6 p.m.  
Wednesday until 8 p.m.  
Closed on Tuesday and on 01.01. / 01.11. / 25.12.

## Bus

1, 16, Eurobus / bus stop: Philharmonie/Mudam

## vél'oh

Philharmonie

II. View of Luxembourg (abstract), C.W. Sellig, 1814 © Photo: Tom Lucas, 2011





# Musée d'Art Moderne Grand-Duc Jean (Mudam Luxembourg)



## Address

---

Museum of Modern Art Grand-Duke Jean (Mudam Luxembourg)  
3, Park Dräi Eechelen / L-1499 Luxembourg-Kirchberg  
T (+352) 45 37 85-1 / F (+352) 45 37 85-400  
info@mudam.lu / www.mudam.lu

## Opening hours

---

Wednesday to Friday from 11 a.m. to 8 p.m.  
Saturday to Monday from 11 a.m. to 6 p.m.  
Closed on Tuesday and on 01.01 / 01.11 / 25.12

## Entrance fee

---

Entrance fee: €5 / Reduced fee: €3  
Free entrance on Wednesday from 6 p.m. to 8 p.m.

## Bus

---

1, 16, Eurobus / bus stop: Philharmonie/Mudam

## vél'oh

---

Philharmonie

Mudam is the foremost museum dedicated to contemporary art in Luxembourg, and strives to be attentive to every discipline and open to the whole world. Its collection and programme reflect current artistic trends and show the emergence of new artistic practices on a national and international scale. The building, by famous Chinese-American architect Ieoh Ming Pei, is a marvellous dialogue between the natural and historical environments. Standing against the vestiges of Fort Thüngen, it follows the line of the former perimeter walls, and is set in the Park Dräi Eechelen, which offers magnificent views of the old town, just a short walk from the European district of Kirchberg.

## Exhibitions

---

### until 06.05.2012

- Conrad Shawcross
- Victor Man
- Børre Sæthre

### until 13.05.2012

- Tina Gillen
- Maurizio Galante & Tal Lancman

### until 10.06.2012

- Fabrica

### until 16.09.2012

- Sarah Sze

### 21.03. - 04.11.2012

- Les Détours de l'abstraction. Collection Mudam

### 13.04. - 03.06.2012

- Design City 2012

### 02.06. - 09.09.2012

- Sanja Iveković

### 02.06. - 16.09.2012

- Emily Bates
- Filipa César
- Simon Evans
- Steven C. Harvey

### 06.10. - 05.01.2013

- Atelier Luxembourg. The Venice Biennale Projects 1988-2011

### 21.11. - 12.05.2013

- Dieu est un fumeur de Havanes. Collection Mudam



### Night of the Museums

---

#### Saturday 13 October 2012

The association "d'stater muséeën" is organising the 12th Night of the Museums, an extraordinary night which shines a spotlight on the cultural life of Luxembourg "after dark". Between 6 p.m. and 1 a.m. (entrance until midnight) the museums offer special guided tours, meetings with artists, concerts, performance, dance and much more. And every museum has a culinary surprise for you. A shuttle bus and limousines transport visitors to the various museums free of charge.

With the support of

FONDATION  
INDEPENDANCE



Programme available from 17.09.2012

at [www.nuit-des-musees.lu](http://www.nuit-des-musees.lu)

Tickets available from 01.10.2012 at the museums and in the Luxembourg City Tourist Office (Place Guillaume II).

#### Entrance fee

---

Entrance fee: € 15 / Reduced fee: € 10

### Museum Festival

---

#### Friday 29, Saturday 30 and Sunday 31 March 2013

The association "d'stater muséeën" is holding its 16th Open Weekend with a special accompanying programme: guided tours, workshops, meetings with artists, conferences etc. The coordinated time schedules and the free bus service enable that this Museum Festival to be enjoyed, as always, as a tour of discovery. Keep the dates free.

Programme available from 11.03.2013

at [www.invitation-aux-musees.lu](http://www.invitation-aux-musees.lu)

#### Entrance fee

---

Free entrance



## Museum pass: "muséeskaart"

The "muséeskaart" is a museum pass which is valid for 3 successive days. It provides free access to permanent and temporary exhibitions in the museums and art centres of the city of Luxembourg and it is available at all tourist information offices and participating museums.

### Entrance fee

Adult: €9  
Youth (12-26 years): €7  
Senior (> 60 years): €7

### Points of sale

Participating museums  
Luxembourg City Tourist Office (Place Guillaume II)



## Other museums

### Bank Museum

#### Address

1, place de Metz / L-1930 Luxembourg  
T (+352) 40 15-24 50

#### Opening hours

Monday to Friday from 9 a.m. to 5.30 p.m.  
Closed on public holidays / Free entrance

#### Bus

Bus stop: Martyrs

### Deportation Memorial

#### Address

3a, rue de la Déportation / L-1415 Luxembourg-Hollerich  
T (+352) 24 78-81 91 / [www.secondeguerremondiale.public.lu](http://www.secondeguerremondiale.public.lu)

#### Opening hours

Monday to Thursday from 9 a.m. to 11 a.m. and from 2 p.m. to 5 p.m.  
Closed on public holidays / Free entrance

#### Bus

Bus stop: Hollerich-Gare

### Postal Museum

#### Address

Corner Place de la Gare/rue d'Épernay / L-2992 Luxembourg-Gare  
T (+352) 40 88-88 40

#### Opening hours

Monday to Friday from 1 p.m. to 5 p.m.  
Closed on public holidays / Free entrance

#### Bus

Bus stop: Gare centrale (central station)

### Tram and Bus Museum of the City of Luxembourg

#### Address

63, rue de Bouillon / L-1248 Luxembourg-Hollerich  
T (+352) 47 96-23 85

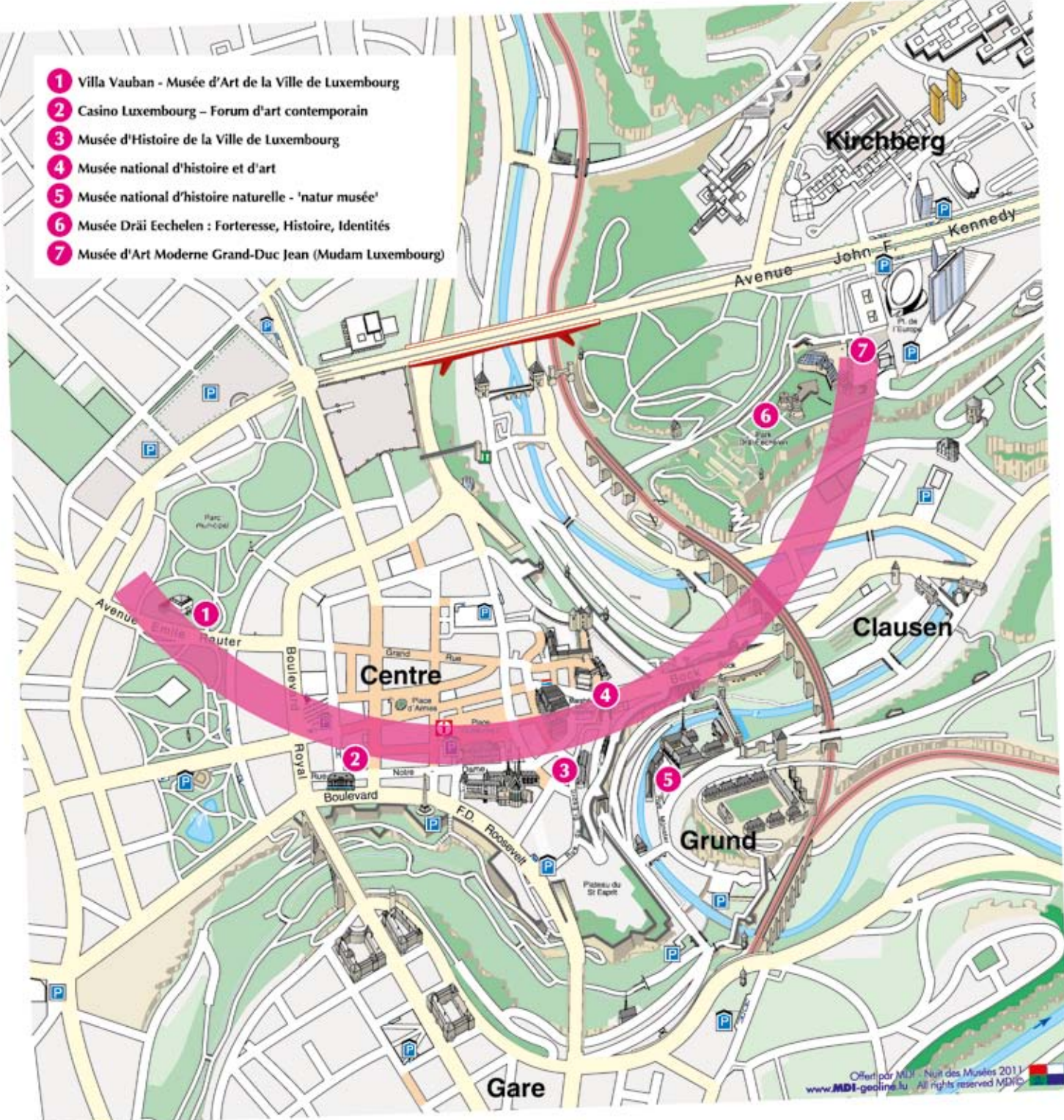
#### Opening hours

Thursday from 1.30 p.m. to 5.30 p.m., Saturday, Sunday and on public holidays from 10 a.m. to 6 p.m. / Free entrance

#### Bus

Bus stop: P&R Bouillon

- 1** Villa Vauban - Musée d'Art de la Ville de Luxembourg
- 2** Casino Luxembourg – Forum d'art contemporain
- 3** Musée d'Histoire de la Ville de Luxembourg
- 4** Musée national d'histoire et d'art
- 5** Musée national d'histoire naturelle - 'natur musée'
- 6** Musée Dräi Eechelen : Forteresse, Histoire, Identités
- 7** Musée d'Art Moderne Grand-Duc Jean (Mudam Luxembourg)



# Tourist Info

## Luxembourg City Tourist Office

---

### Address

30, place Guillaume II / L-1648 Luxembourg  
T (+352) 22 28 09 / F (+352) 46 70 70  
touristinfo@lcto.lu / www.lcto.lu

### Opening hours

01.04-30.09: Monday to Saturday from 9 a.m. to 7 p.m.  
and Sunday from 10 a.m. to 6 p.m.  
01.10-31.03: Monday to Saturday from 9 a.m. to 6 p.m.  
and Sunday from 10 a.m. to 6 p.m.

## Cityshopping Info Point

---

### Address

Place d'Armes / L-2012 Luxembourg  
T (+352) 26 270 270  
info@cityshopping.lu / www.cityshopping.lu

### Opening hours

Tuesday to Saturday from 10 a.m. to 6 p.m.  
Closed on Sunday and Monday

---

## Colophon

### Published by "d'stater muséeën"

B.P. 345 / L-2013 Luxembourg  
info@statermuseeen.lu / www.statermuseeen.lu

### Coordination

Martine Duhr, Jo Kox

### Graphic design

Vidale-Gloesener Graphic Design

### Translation/proofreading

Alexandra Keens

**Photo credits** Cover: Stephan Balkenhol, *Portrait of S.A.R. Le Grand-Duc Jean* (abstract), 2006, bas-relief on poplar wood, commission and collection Musée d'Art Moderne Grand-Duc Jean, produit par l'Administration des Bâtiments Publics © Photo: Rémi Villaggi / Villa Vauban © Photo: Andrés Lejona, 2009 / Casino Luxembourg © Photo: Jessica Theis – Blue Box Design, 2011 / Musée d'Histoire de la Ville de Luxembourg © Photo: Falk Eisleben, 2007 / MNHA © Photo: Tom Lucas, 2008 / MnhnL © Photo: MnhnL, 2001 / Musée Dräi Eechelen © Photo: Marc Jeitz, 2009 / Mudam Luxembourg, I. M. Pei architect design © Photo: Christian Aschman, 2008 / Night of the Museums, Casino Luxembourg, Delphine Pouillé: *Objets prêts-à-porter* © Photo: Tim Lecomte, 2009 / Museums Festival, Musée d'Histoire de la Ville de Luxembourg © Photo: Tom Lucas, 2007

Subject to alterations (01.03.2012)

